



The Complete Solution Provider

Specialized in

SKIDS & MODULES

Cutech is a diversified and rapidly expanding Engineering Company. We offer wide range of Services & Products to Industrial, Commercial & Government Clients across Petrochemical, Process, Oil & Gas, Marine, Cement and Power Sectors.

Cutech is well established in Module & Skid Packages Supply from initial design through Factory Acceptance Testing (FAT), we have the internal capabilities to provide a turnkey package complete with 3D modeling, fabrication, controls and instrumentation, electrical wiring, pressure testing, performance testing and installation.

WATER TREATMENT PLANT/ SKID

- Chemical Injection Skids
- Hypochlorite generators
- UF membrane package
- Water treatment systems
- Produced Water Treatment Package

PROCESS SKID/ MODULES

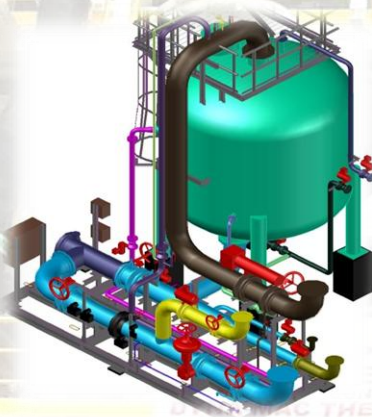
- Gas Compressor Packages
- Fuel Gas Skids
- U-stamped pressure vessels & Heat Exchangers
- Odorant Injection Skids
- Fuel Gas & Fuel Oil Metering Skids

PUMP SKID

- Reciprocating compressors
- Engine driven Other specialty compressors
- Air and gas compressor packages
- Instrumentation and control panels
- Air Compression , Filtration & Receiver Package

DELUGE SYSTEM/SKID

- Anti-foam systems
- Fire extinguishing systems
- Outdoor portable integrated power and control systems



REGISTERED CORPORATE OFFICE & CONTACT:

Address: #03-18, Pioneer Junction, 3, Soon Lee Street, Singapore 627606.

Email: enquiry@cutechgroup.com | Tel: +65 6665 0187 | Fax: +65 6560 5892

Overseas Facilities In: UAE, Saudi Arabia, Malaysia, Indonesia, India & South Korea

WWW.CUTECHGROUP.COM

OUR CAPABILITIES FABRICATION

Proficient to deliver initial design through Factory Acceptance Testing (FAT), we have internal capabilities to provide a turnkey package complete with 3D modeling, fabrication, controls and instrumentation, electrical wiring, pressure testing, performance testing and installation.

Piping Systems like Carbon Steel, Stainless Steel, Duplex Stainless Steel, Titanium, CPVC, PTFE, FRP, GRE etc.

Factory Facilities like

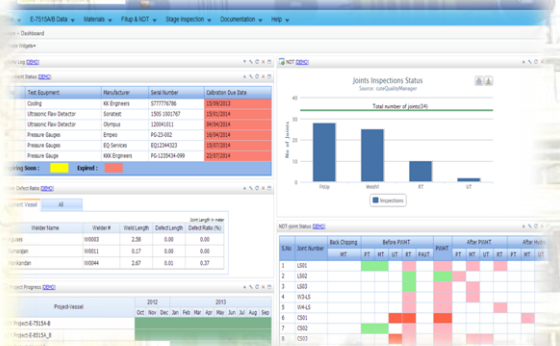
- Covered Work Shop
- Covered & Open Materials Storage Area
- Lifting's Equipment's
- In house NDT

Overseas Fabrication facilities in

- UAE
- Saudi Arabia
- Malaysia
- Indonesia
- India

PROJECT MANAGEMENT SOFTWARE (CUTEQM) (Customizable to client requirement)

- All in one QA activity planning and Project Progress monitoring.
- Inspection planning (Request / reschedule / approve)
- Piping / Electrical / Mechanical / Structural All NDT data capture (Fit-up / RT / UT / MT / DPT etc)
- Punch Lists Categorization
- Reports (Test pack / Department wise)
- Management monitoring
- Welder record traceability
- Notifications Alerts by Email / SMS
- Managing project requirements
- Material Management
- Stores inventory management



**FPSO OSX 2
MODULE 09 LOAD OUT
CONGRATULATIONS !!
DYNA-MAC THE NAME, YOU CAN TRUST**

REGISTERED CORPORATE OFFICE & CONTACT:

Address: #03-18, Pioneer Junction, 3, Soon Lee Street, Singapore 627606.
Email: enquiry@cutechgroup.com | Tel: +65 6665 0187 | Fax: +65 6560 5892
Overseas Facilities In: UAE, Saudi Arabia, Malaysia, Indonesia, India & South Korea

WWW.CUTECHGROUP.COM

DESIGN & ENGINEERING FOR MODULE/ SKID/SYSTEM PACKAGE

Design & Engineering Services we Offer

Process Engineering

- Process calculations
- PFDs
- P&IDs
- Process data sheets

Mechanical Engineering

- Pressure vessels
- Heat exchangers
- Reactors
- Skid GA

Electrical Engineering

- Single line drawings
- Cable tray routings

Piping Engineering

- Stress analysis,
- Plot plan & Conceptual layout
- Equipment & Piping layout
- Isometrics & MTO

Civil Engineering

- Design calculations
- Piling layouts
- Structural layouts & Architectural

Instrumentation Engineering

- Hook up drawings
- Specifications and Data sheets

Systems/Packages/Modules we Offer

- ❖ Gas Compression Skid
- ❖ Gas Dehydration and TEG Regeneration
- ❖ MEG Injection and Regeneration
- ❖ Sea Water Treatment & Injection
- ❖ Chemical Injection
- ❖ Produced Water Treatment
- ❖ Gas Sweetening (Amine Unit)
- ❖ CO2 Removal & N2 Generation
- ❖ Utilities – IA; UA; FW; STP; Power Plant/Generation

SOFTWARES:

NAME	DESCRIPTION
CAD WORX/SOLID WOKS	3D Modelling (Process Plants/Packages/Skids/Auto ISO extraction)
UNISIM/HYSIS	Process Simulation
PVElite	Pressure Vessel Design
CEASER II	Piping flexibility/stress Analysis
SACS / STAADPRO	Structural Analysis
ETAP	Load Flow Calculation, Cable Sizing, Short circuit Current Estimation etc
MAROS	Reliability & Availability Study
Primavera / MS Project	Project Scheduling / Planning



FPSO OSY 2
MODULE 09 LOAD OUT
CONGRATULATIONS !!!
DYNA-MAC THE NAME, YOU CAN TRUST

REGISTERED CORPORATE OFFICE & CONTACT:

Address: #03-18, Pioneer Junction, 3, Soon Lee Street, Singapore 627606.
Email: enquiry@cutechgroup.com | Tel: +65 6665 0187 | Fax: +65 6560 5892
Overseas Facilities In: UAE, Saudi Arabia, Malaysia, Indonesia, India & South Korea

WWW.CUTECHGROUP.COM

ACCREDITATION AND CERTIFICATIONS



Cert No:Q-8111/19



Cert No:E-8111/19



Cert No:O-8111/19



FABRICATION FACILITIES

- ❖ Singapore
 - Factory 1 – 65 & 67 Tuas View walk 2
- ❖ Malaysia- Cutech Solutions Malaysia Sdn Bhd
- ❖ Indonesia - PT CUTECH ,
- ❖ Saudi Arabia - Cutech Arabia LLC , Dammam
- ❖ UAE- Cutech Engineering , Abu Dhabi
- ❖ India – Cutech Solutions India Pvt Ltd

REGISTERED CORPORATE OFFICE & CONTACT:

Address: #03-18, Pioneer Junction, 3, Soon Lee Street, Singapore 627606.
Email: enquiry@cutechgroup.com | Tel: +65 6665 0187 | Fax: +65 6560 5892
Overseas Facilities In: UAE, Saudi Arabia, Malaysia, Indonesia, India & South Korea

WWW.CUTECHGROUP.COM